

## KPS Series (Plastic Bag Opening)

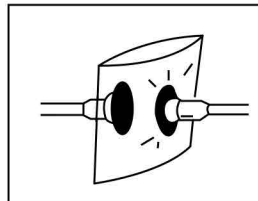
### Features and Strengths

Developed to be used for opening plastic bags this cup gives good adhesion to thin plastic and film type materials.



### Suitable for Handling

- Plastic Bag Opening
- Thin Film Materials
- Paper Bag Handling



### Order No.

**KPS-1**      **U**  
 ①                      ②

#### ① Suction cup Ø

- **KPS-1\*** - Ø34
- KPS-2 - Ø28
- KPS-3 - Ø13
- KPS-4 - Ø16
- KPS-5\* - Ø28
- KPS-5-15\* - Ø15
- KPS-6 - Ø30
- KPS-7 - Ø68
- KPS-8 - Ø25
- KPS-9\* - Ø40
- VU-30-X - Ø30

\* G1/8" Female fitting available

#### ② Material

- N - NBR
- S - Silicon
- WS - White Silicon
- HS - High Temp. Silicon
- CS - Conductive (Special mat'l)
- **U** - Urethane

Remark : KPS-8 available only 'S', 'WS', 'HS'

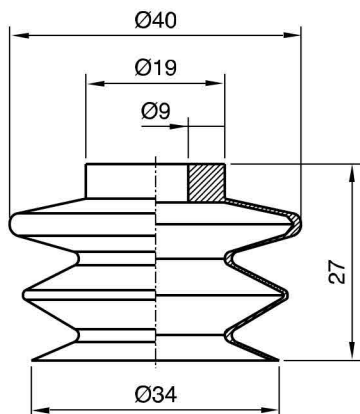
### Recommended (max.) lifting forces

Model	Volume (cm <sup>3</sup> )	Lifting Force (kg) - Perpendicular		
		-20 kPa	-60 kPa	-90 kPa
KPS-1	14,5	1,22	2,24	2,75
KPS-2	2,0	0,7	1,53	1,83
KPS-3	0,5	0,35	0,85	1,12
KPS-4	1,0	0,6	1,22	1,63
KPS-5	2,0	0,7	1,53	1,83
KPS-5-15	1,1	0,4	1,11	1,23
KPS-6	2,0	0,8	1,7	2,05
KPS-7	20	5,5	14	18,5
KPS-8	1,4	0,5	1,15	1,25
KPS-9	8	1,55	2,8	5,1
VU-30-X	1,8	0,65	1,48	1,78

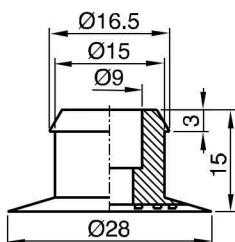
## Dimensional Information

SUCTION CUPS

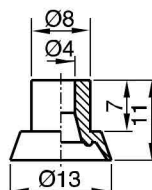
**KPS-1**



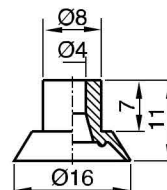
**KPS-2**



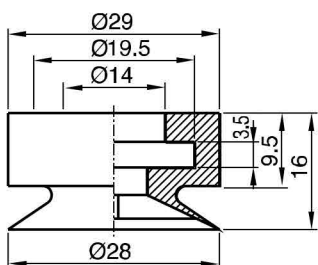
**KPS-3**



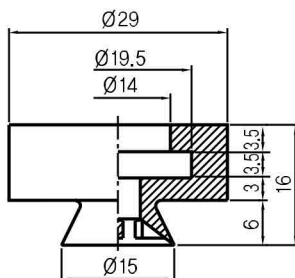
**KPS-4**



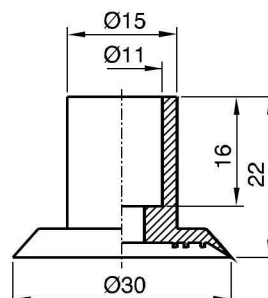
**KPS-5**



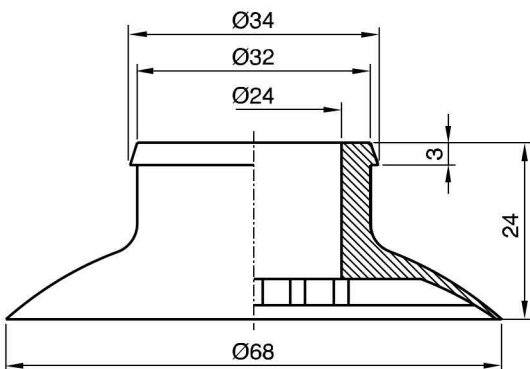
**KPS-5-15**



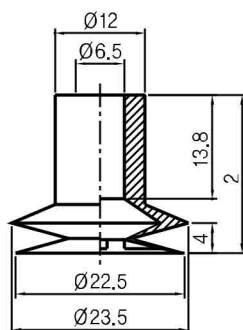
**KPS-6**



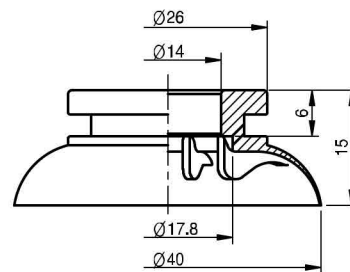
**KPS-7**



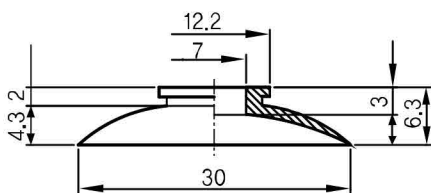
**KPS-8**



**KPS-9**



**VU-30-X**



[ Measure unit : mm ]